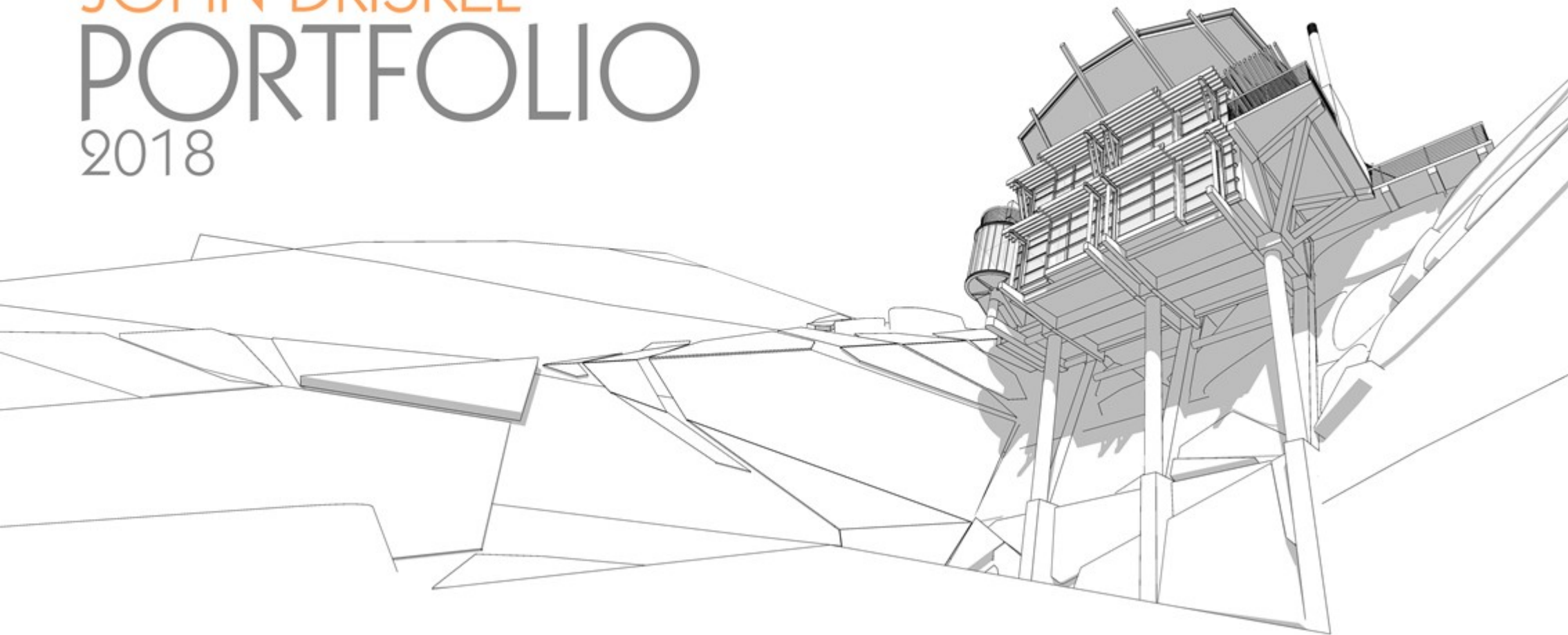


JOHN DRISKEL
PORTFOLIO
2018

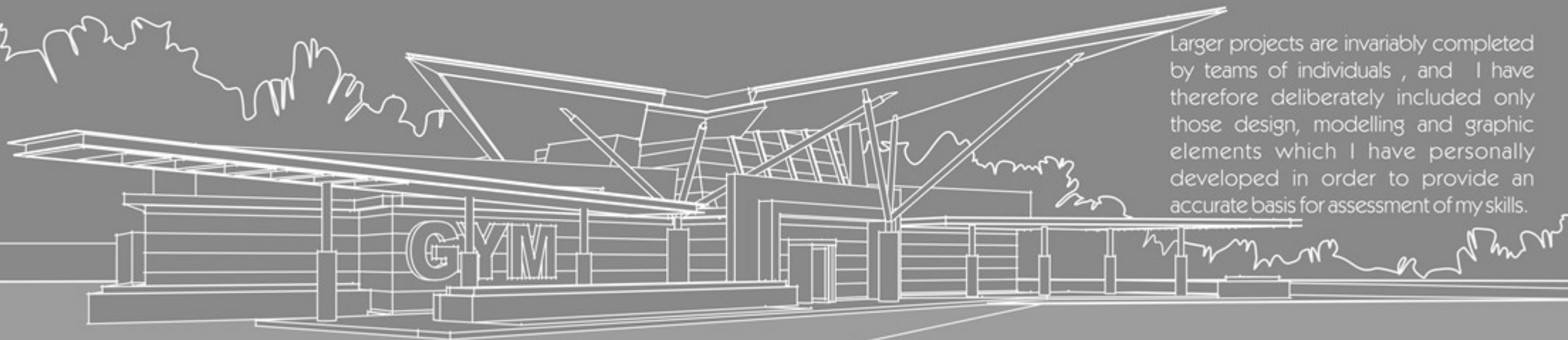


L O W R E S O L U T I O N E L E C T R O N I C V E R S I O N

INTRODUCTION

This portfolio of design and illustration work provides a snapshot of projects with which I have been involved as a design architect in South Africa and as a design contractor for various international practices.

Larger projects are invariably completed by teams of individuals, and I have therefore deliberately included only those design, modelling and graphic elements which I have personally developed in order to provide an accurate basis for assessment of my skills.



JOHN DRISKEL
B. ARCH.

COPYRIGHT RESERVED ©



PROPOSED
REDEVELOPMENT OF
THE SUMMERLAND SITE
DOUGLAS ISLE OF MAN



Apartments, affordable housing units
& integrated parking levels.









OFFICES
DOUGLAS ISLE OF MAN



DESCRIPTION

4300 square metres of net leasable office area on 5 floors with basement parking linked to existing offices via overhead link .





PROPOSED RETIREMENT
LIVING
DOUGLAS ISLE OF MAN



42 residential units with associated facilities.

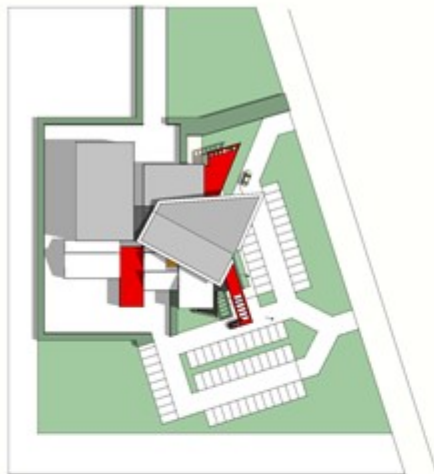




PROPOSAL FOR THE
JOHN MCVEITY CENTRE
ADELAIDE AUSTRALIA



Bid proposal for gym and indoor
sports centre.



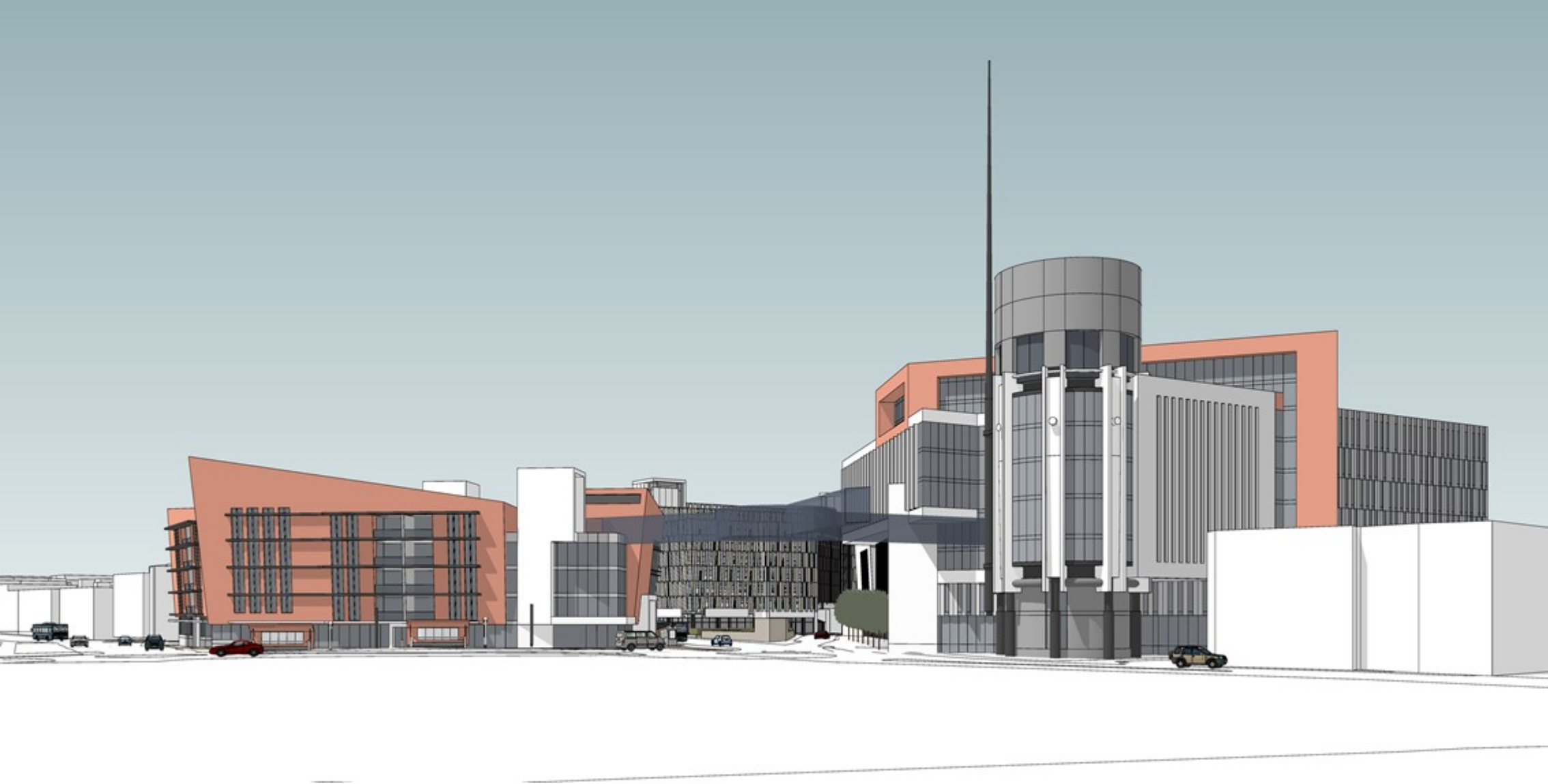


LOWER DOUGLAS
MASTERPLAN
DOUGLAS ISLE OF MAN



Bid proposal integrating a series of buildings on the North Quay precinct. Mixed use, parking garage and public realm development.





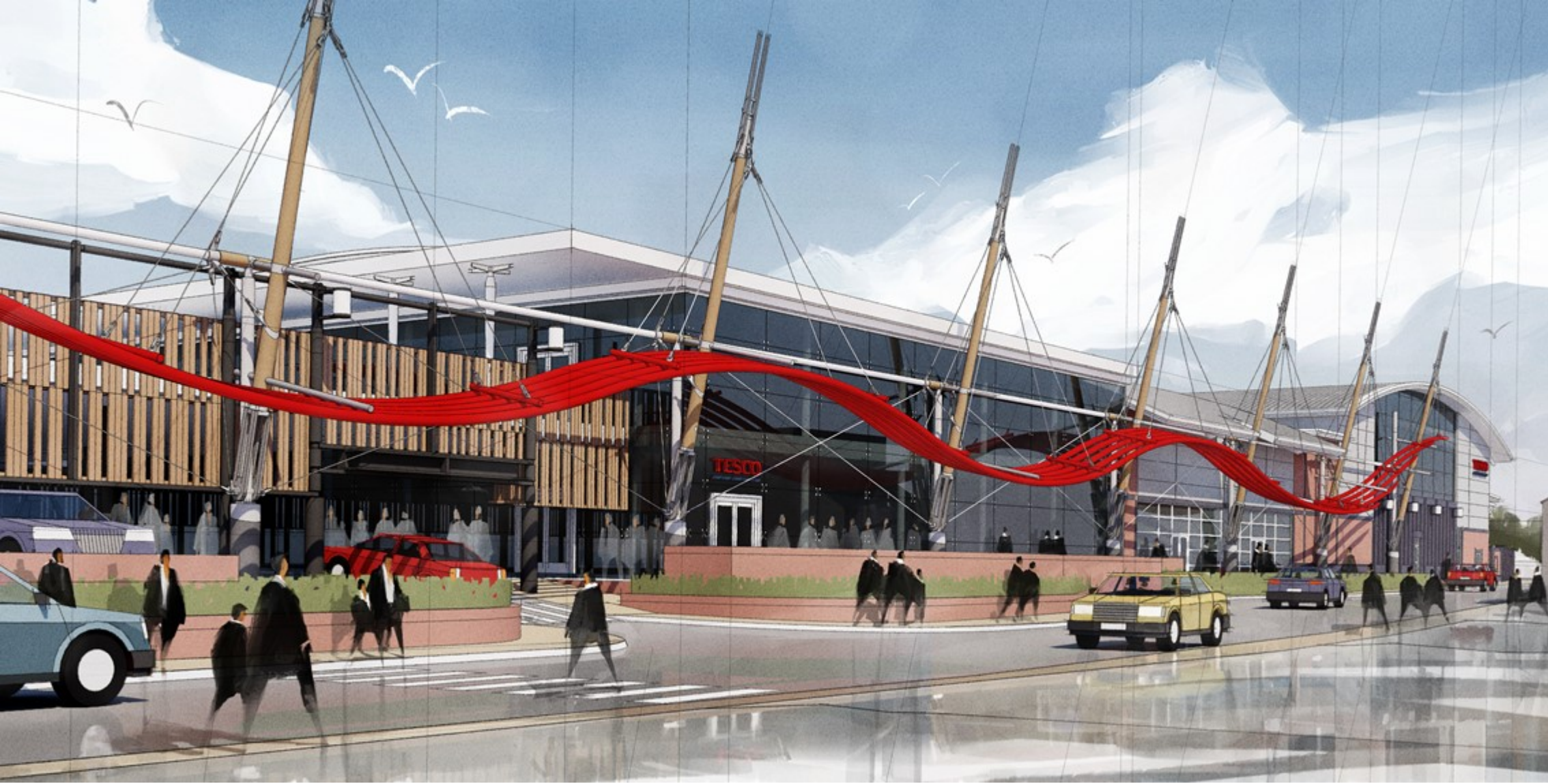


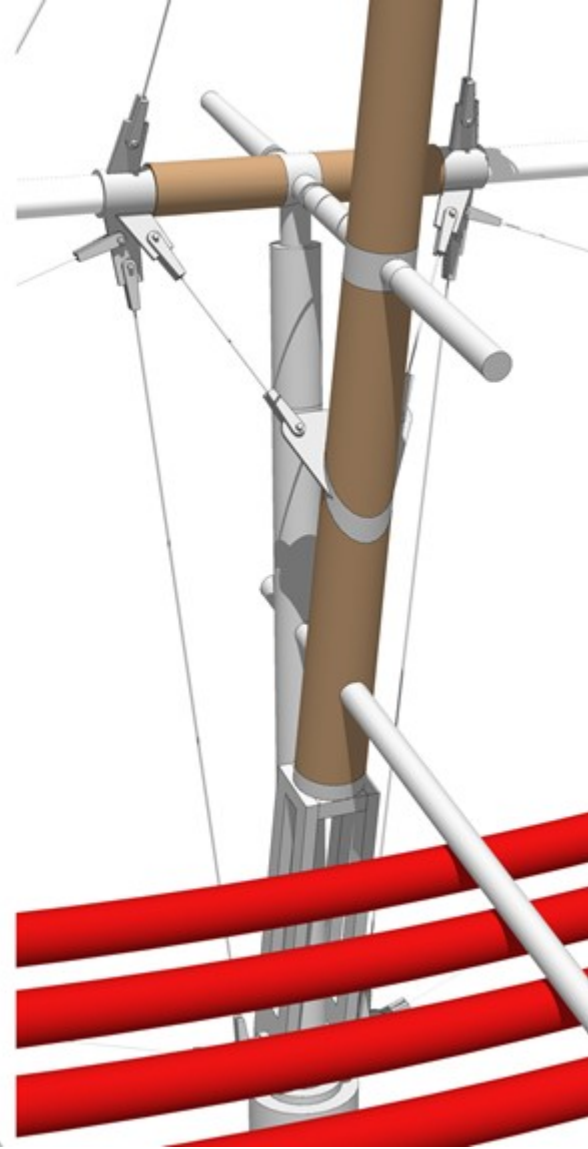
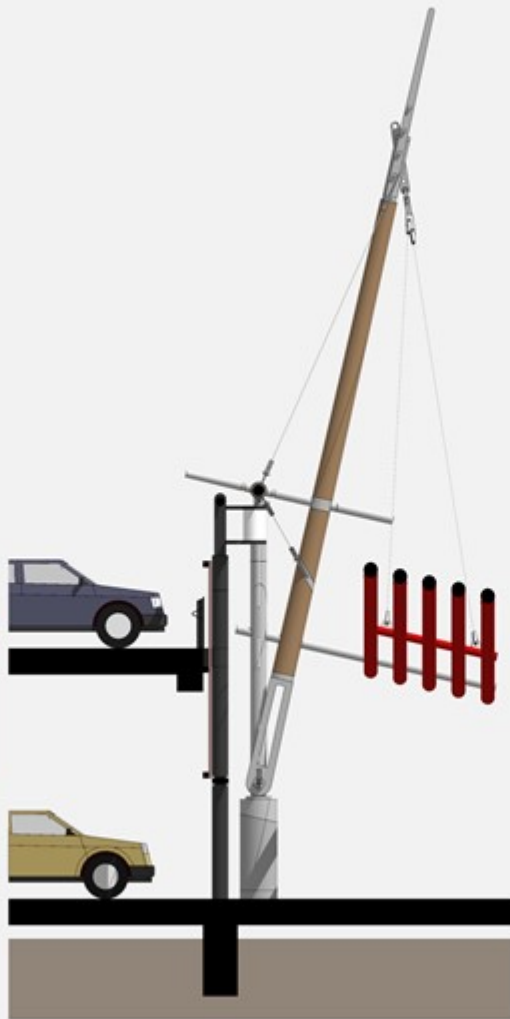
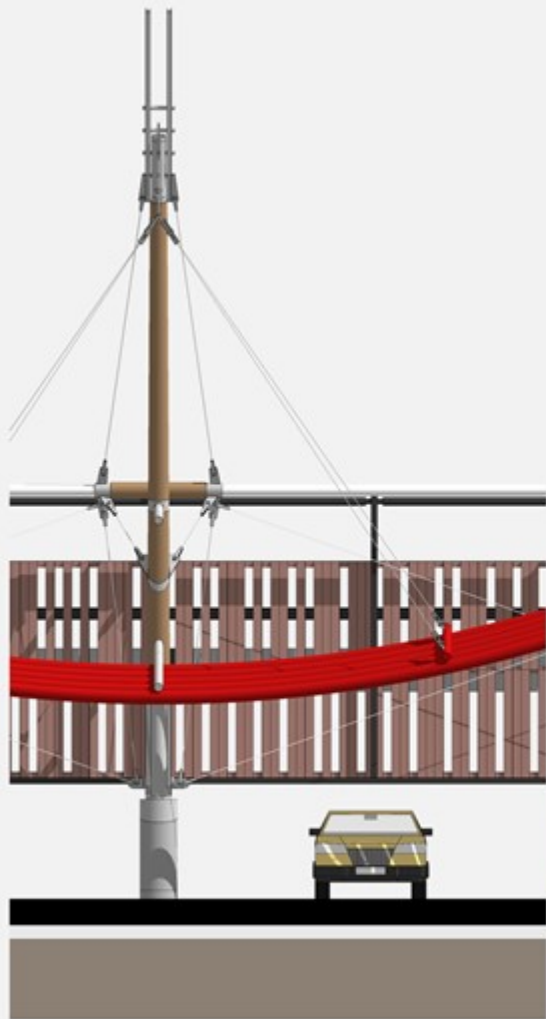


PROPOSED ADDITIONS
TO TESCO
DOUGLAS ISLE OF MAN

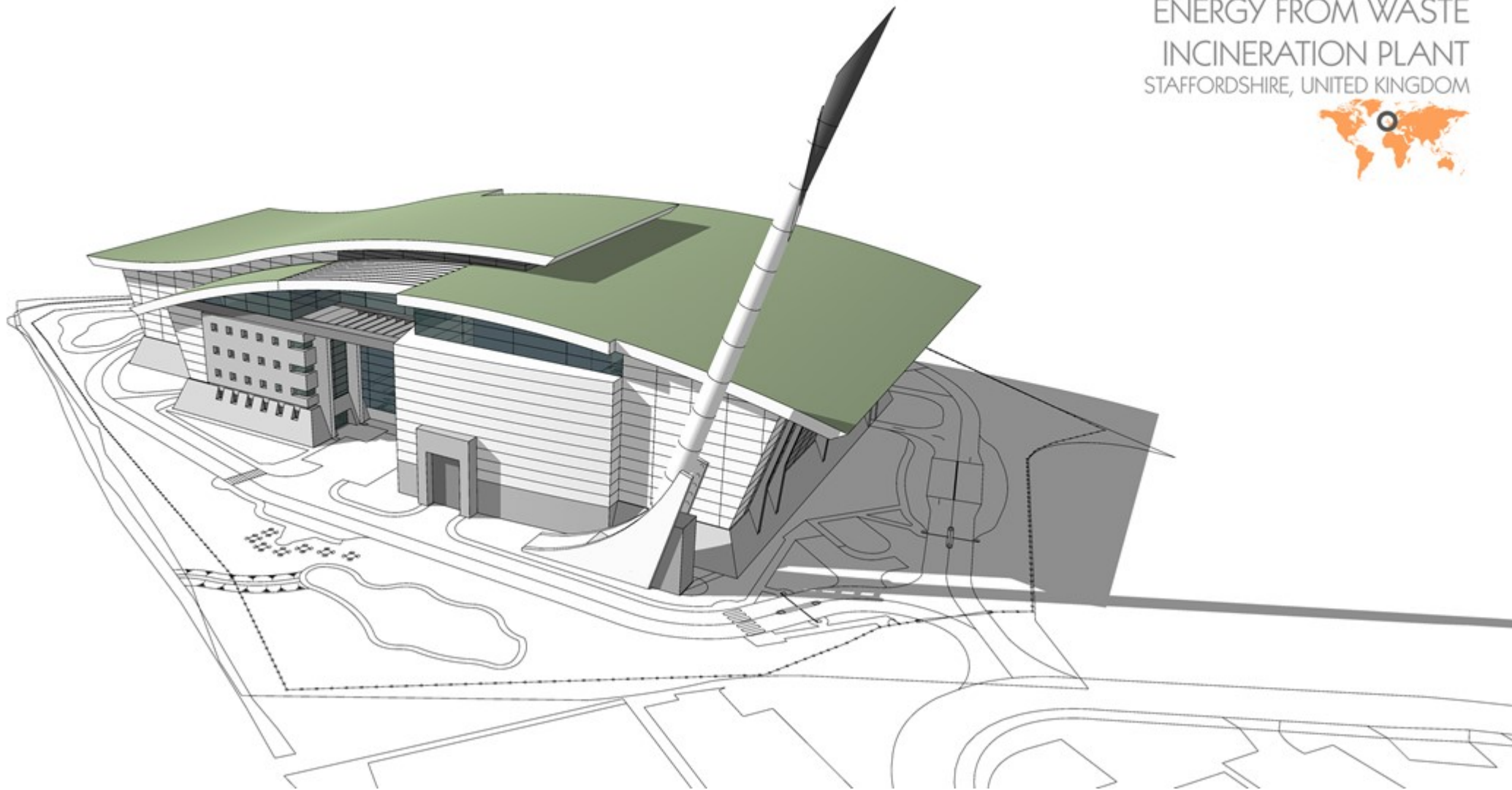


Extensions of retail and parking areas of existing food retailer, with redesign of external facade.





ENERGY FROM WASTE
INCINERATION PLANT
STAFFORDSHIRE, UNITED KINGDOM





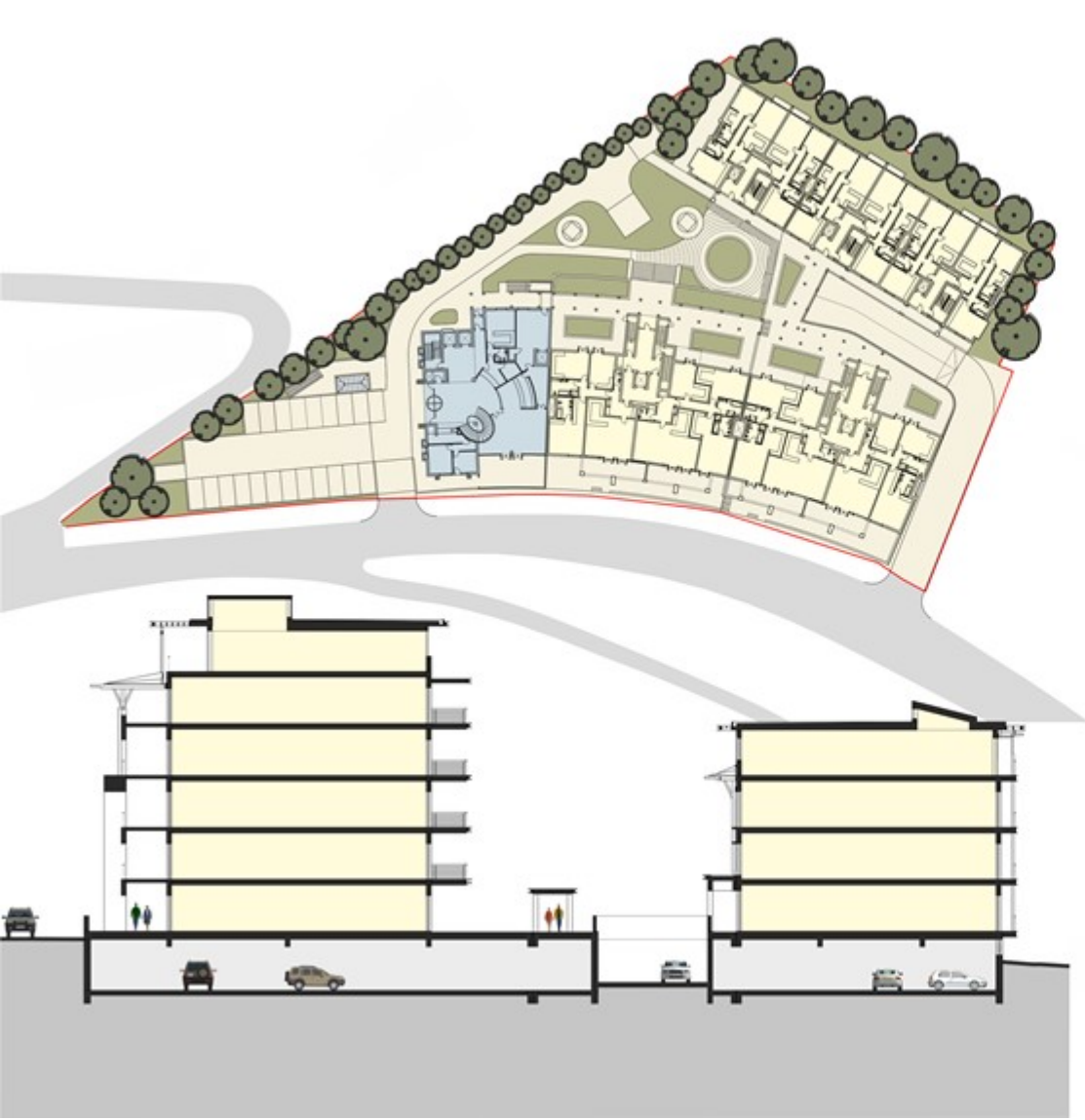
PROPOSED
APARTMENTS AND
HEALTH CLUB
PORT ST MARY ISLE OF MAN



49 Luxury apartments & health club
with basement for 106 parking.







OFFICES
DOUGLAS ISLE OF MAN





MASTER PLAN
ROCHDALE ENGLAND



Mixed use development
incorporating retail, offices,
apartments and housing elements.





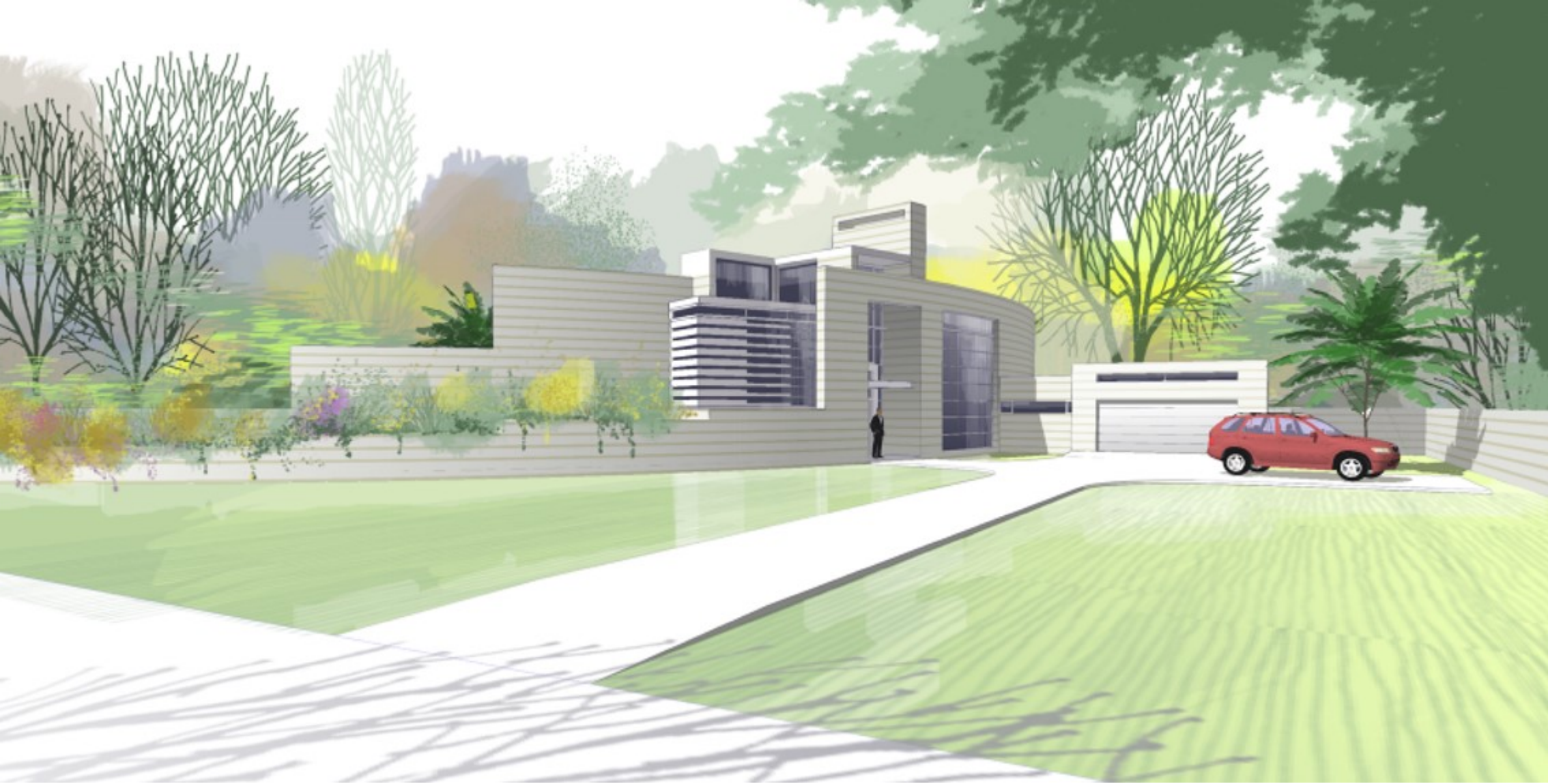
PROPOSED LIFESTYLE
CENTRE
ROYAL ASCOT CAPE TOWN

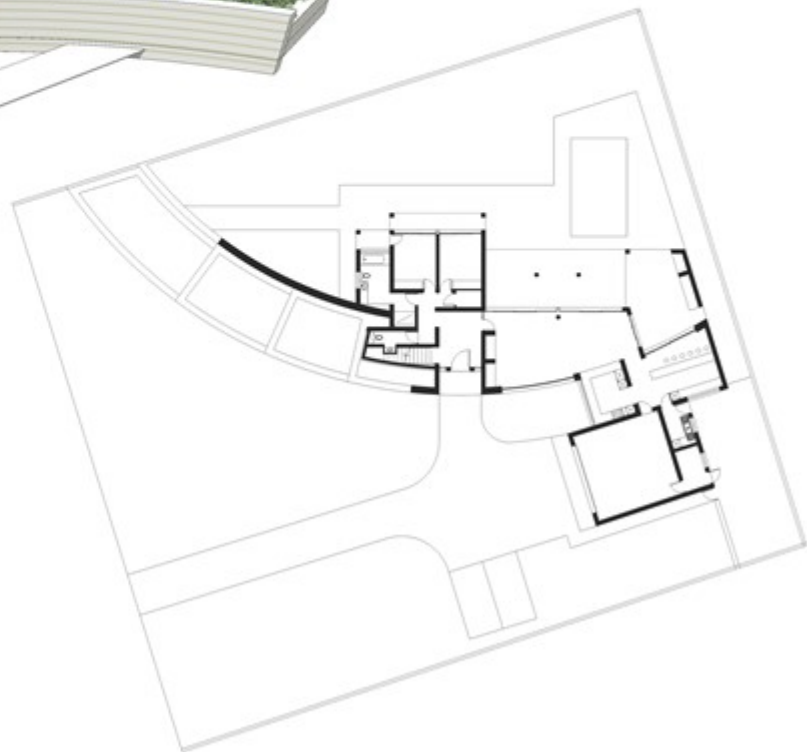
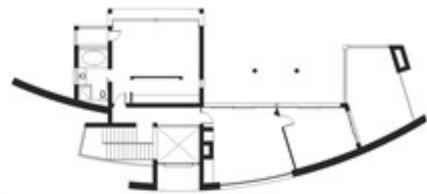


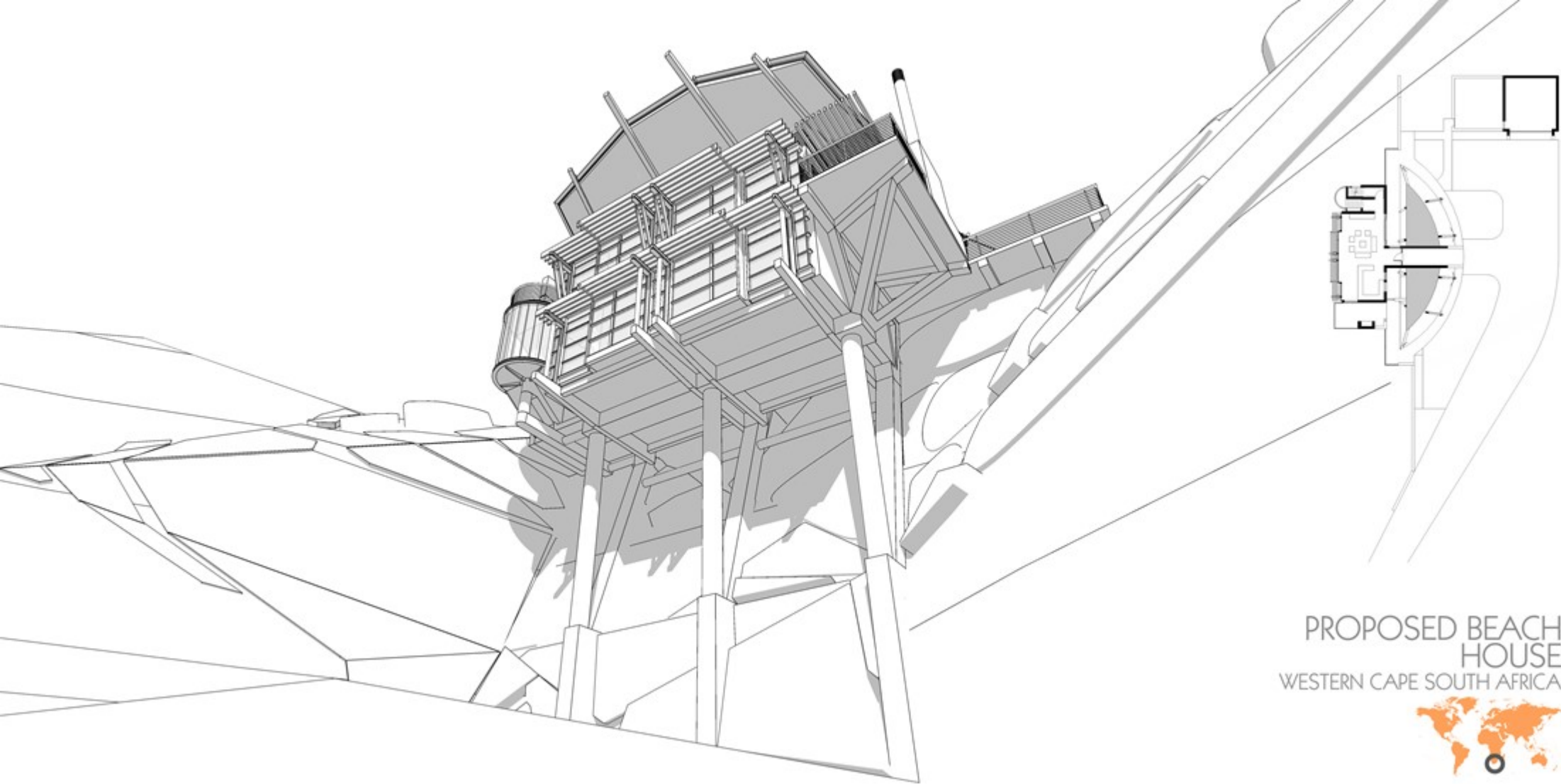


RESIDENCE
BLOEMFONTEIN SOUTH AFRICA



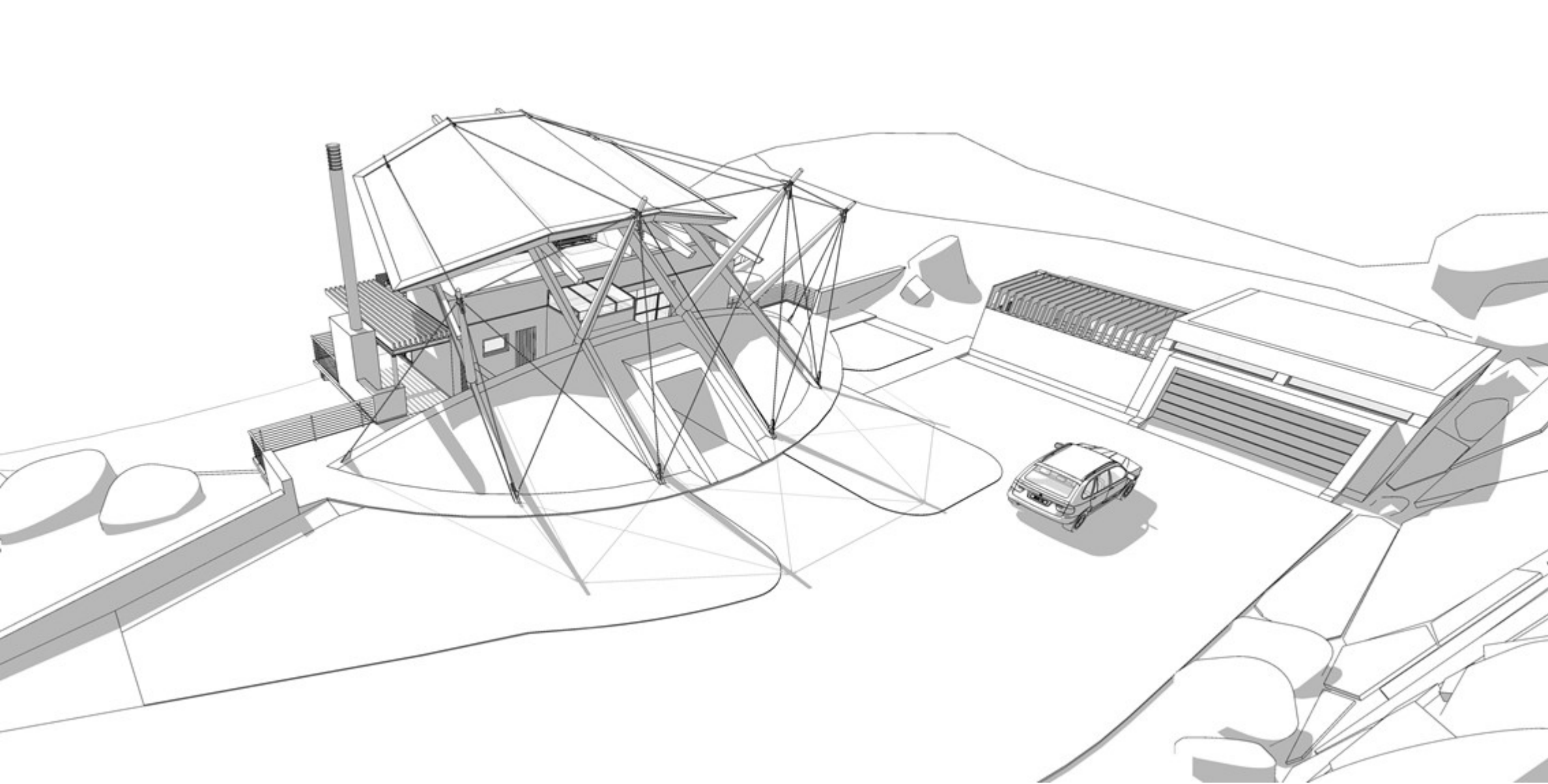


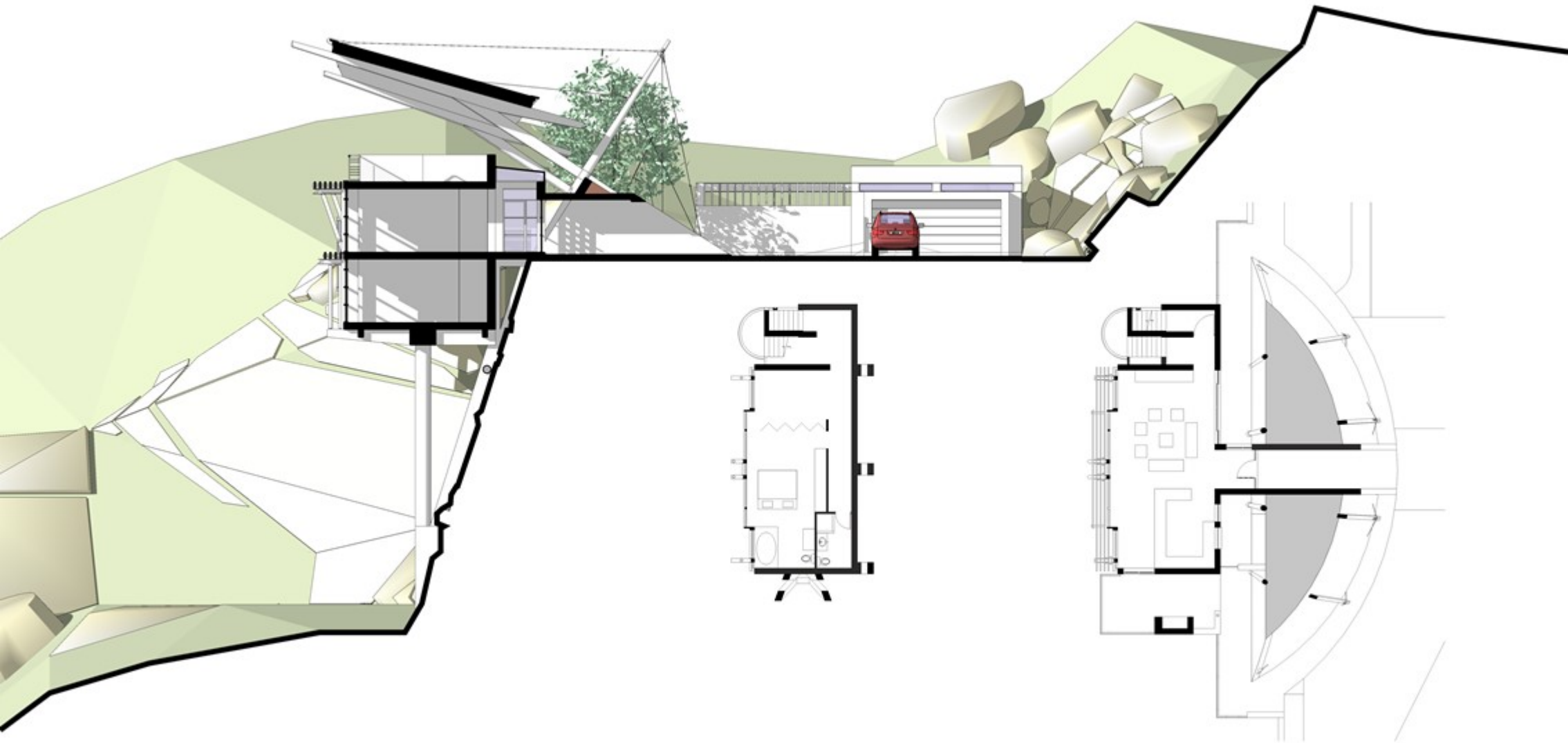




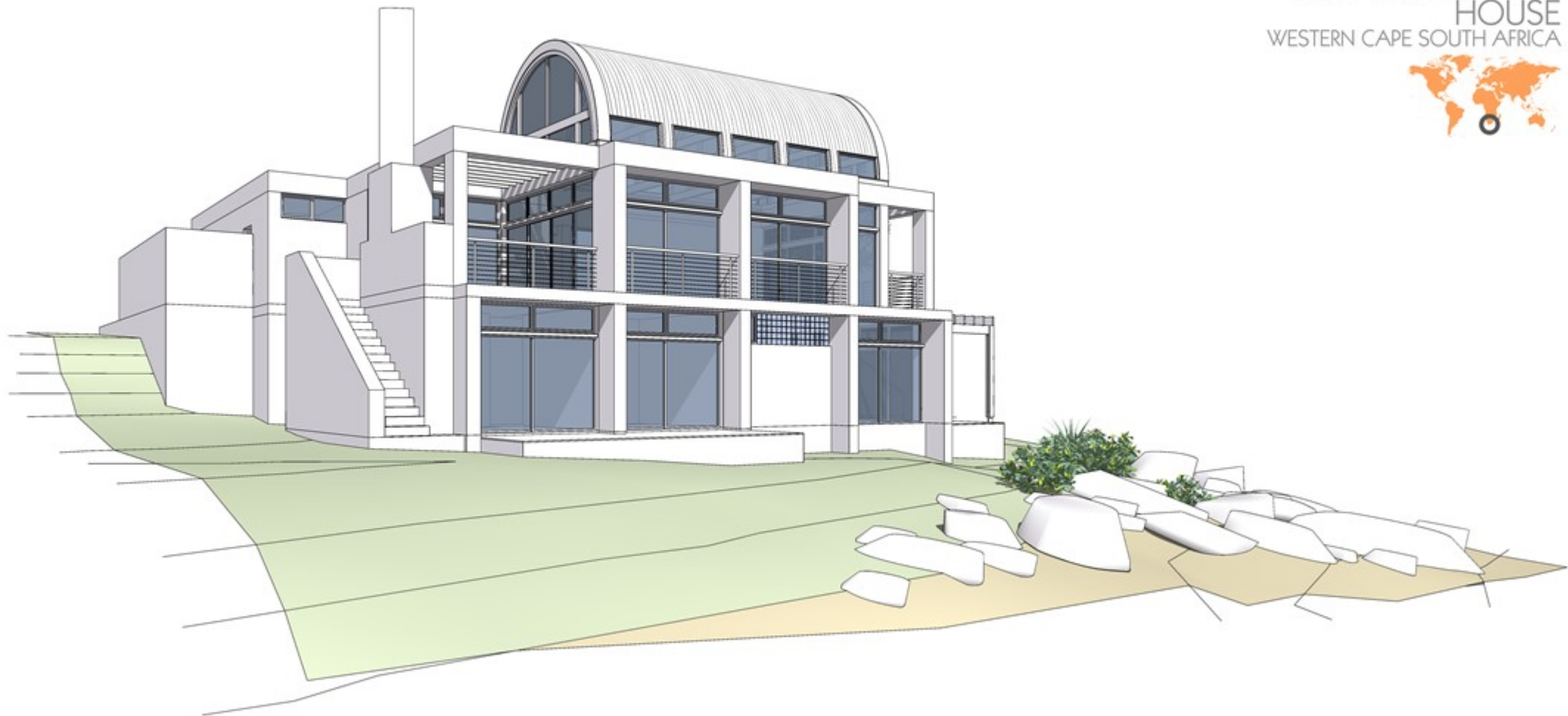
PROPOSED BEACH
HOUSE
WESTERN CAPE SOUTH AFRICA

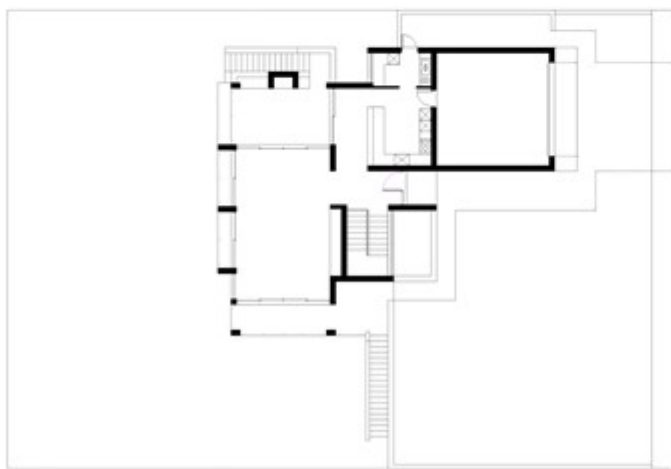
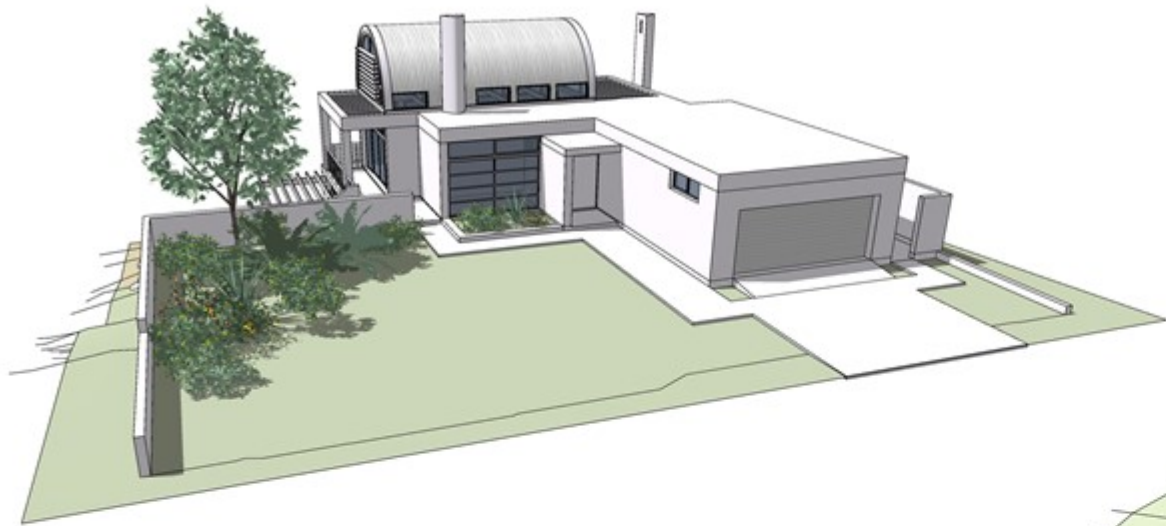






PROPOSED BEACH
HOUSE
WESTERN CAPE SOUTH AFRICA

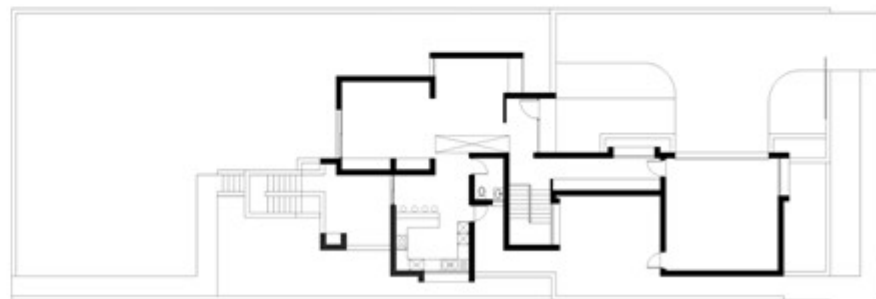
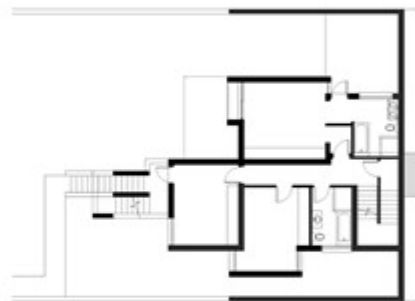
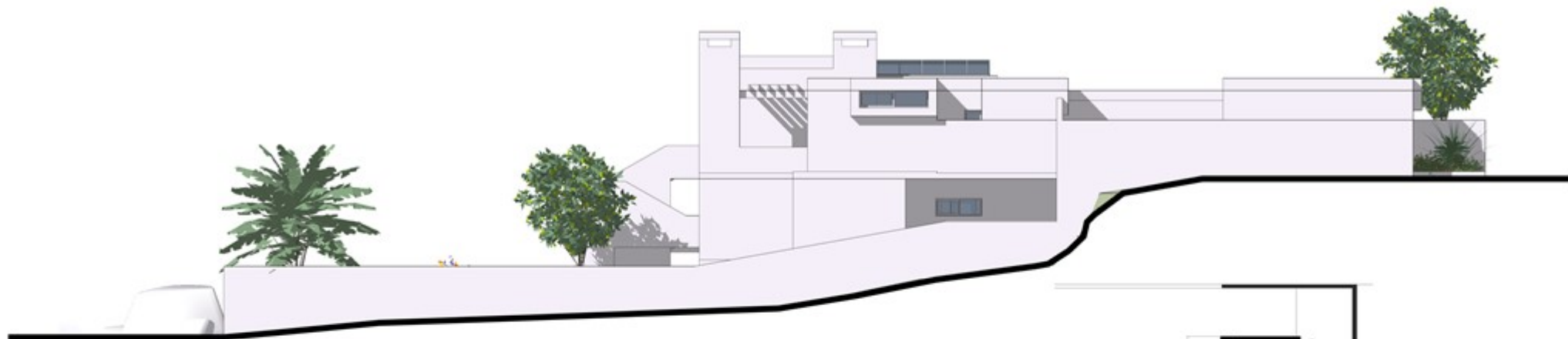




PROPOSED BEACH
HOUSE
WESTERN CAPE SOUTH AFRICA







PROPOSED
DEVELOPMENT
SIMONSTOWN SOUTH AFRICA



Proposal for the development of two compact holiday residences on adjacent stands in Admirals Cove overlooking the bay.





WINE TASTING AREA
WESTERN CAPE SOUTH AFRICA



